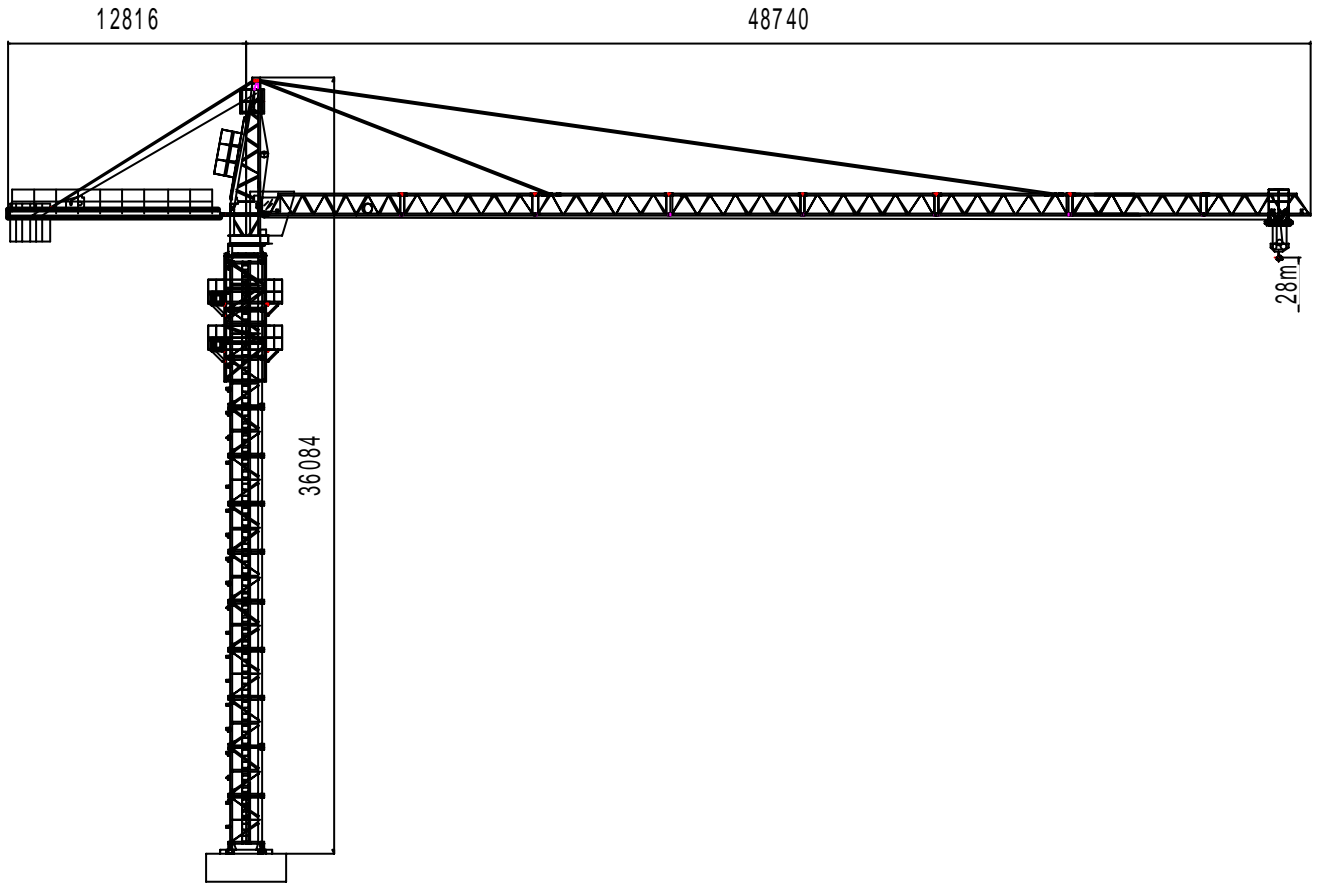

ii QTZ40A (4807)

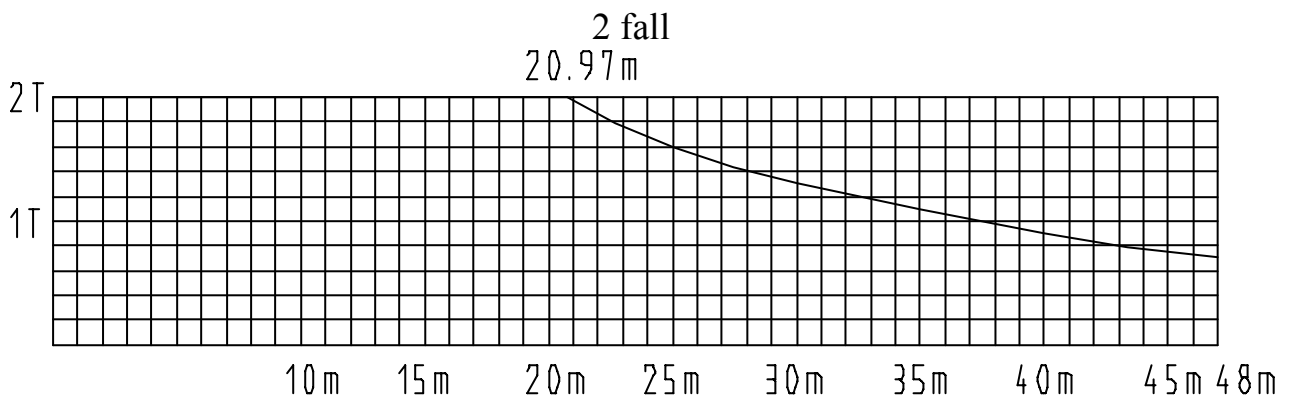
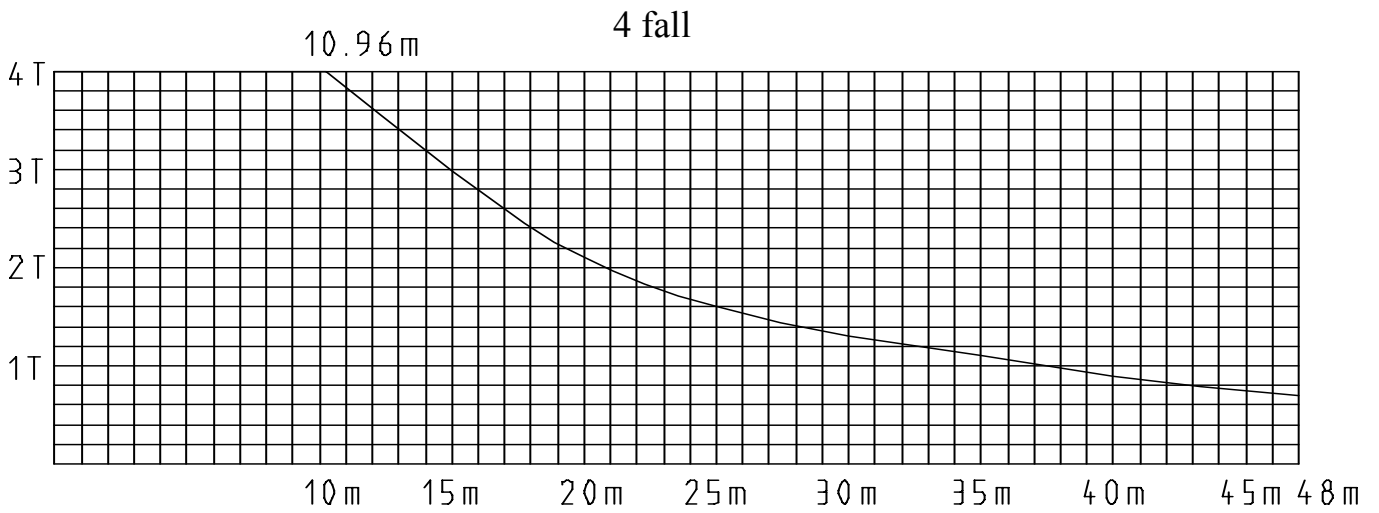
TABLE OF CONTENTS

1. structural diagram and hoisting performance curve
2. main technical parameter
3. main parts parameter
4. main metal parts list

1. structural diagram and hoisting performance curve



hoisting moment performance curve



4 fall loading diagrams

radius m	3-10.96	11	12	13	14	15	16
capacity T	4	3.986	3.638	3.343	3.09	2.87	2.68
radius m	17	18	19	20	21	22	23
capacity T	2.51	2.36	2.23	2.106	1.996	1.897	1.806
radius m	24	25	26	27	28	29	30
capacity T	1.732	1.646	1.576	1.510	1.449	1.393	1.34
radius m	31	32	33	34	35	36	37
capacity T	1.29	1.24	1.200	1.159	1.121	1.084	1.050
radius m	38	39	40	41	42	43	44
capacity T	1.017	0.986	0.957	0.929	0.902	0.877	0.852
radius m	45	46	47	48			
capacity T	0.829	0.807	0.760	0.700			

2 fall loading diagrams

radius m	3-20.97	21	22	23	24	25	26
capacity T	2	1.996	1.897	1.806	1.732	1.646	1.576
radius m	27	28	29	30	31	32	33
capacity T	1.510	1.449	1.393	1.340	1.290	1.240	1.200
radius m	34	35	36	37	38	39	40
capacity T	1.159	1.121	1.084	1.050	1.017	0.986	0.957
radius m	41	42	43	44	45	46	47
capacity T	0.929	0.902	0.877	0.852	0.829	0.807	0.760
radius m	48						
capacity T	0.700						

3. main technical parameter

item		unit	parameter					
Metric crane moment KN.m		KN.M	400					
Max lifting weight		T	4					
Weight in max working extent		T	0.79					
Max Working extent		M	3 ~ 46.8					
Lifting height	Independent	M	28					
	Attachment	M	120					
Lifting speed	Rate		2			4		
	Lifting speed	M/min	70	35	7.5	35	17.5	3.75
	Max lifting weight	T	1	2	2	2	4	4
Turning speed		R/min	0.375/0.75					
Speed of changing extent		M/min	38/19					
Lifting speed		M/min	0.6					
Weight	Balancing weight	T	6.4					
	Net weight of complete machine	T	20.285					
Max slewing radius		M	47.74					
Tail department slewing radius		M	12.816					
Max working wind speed		M/s	20					
Lifting wind speed \leq		M/s	13					
Working environment temperature		°C	-20~+40					

3. main parts parameter

item			parameter		
Hoisting	Motor	Model		YZTD200L2	4/8/32
		Power	Kw	15/15/3.5	
		Rotate speed	R/min	1400/700/180	
	brake	Model		YWZ-300/45	
		Braking moment	N.m	630	
		Hydraulic braking		YT ₁ -45	
	reducer	Model		JZQ400	
		Speed Ratio		i=10.35	
Steel rope			6×37-1770-12.5		
Slewing	Motor	Model		YD132S-8/6	YZRW-6
		Power	Kw	2.6/3.7	3.7
		Rotate speed	R/min	730/970	908
	Reducer	Model		xx4-100-180planetary reducer	
		Speed Ratio		i=180	
	brake			Electromagnetism braking	
	Slewing rear bearing			HSW1220.32	
Trolleying	Motor	Model		YD112M	8/4
		Power	Kw	1.5/2.4	
		Turning rate	R/min	700/1410	
	Reducer	Model		cycloid pinwheel reducer	
		Speed Ratio		i=37	
Steel rope			6×19-6.2		
Hydraulic lifting	Motor	Model		Y132S-4	B5
		Power	Kw	5.5	
		Turning rate	R/min	1440	
	Hydraulic Station	cylinder model		HSGK01-140/100E	
		Route of travel	mm	1300	
	Working Pressure			MPa	16

4. main metal parts list

NAME	MATERIAL SPECIFICATION	REMARK
Standard section	Main chord ∠140×140×12	external dimensions 1500×1500 overall height:2200
jib	Upper chord ø76×8	total 8 sections
	Lower chord u-iron and seal board [8	Jib section connected through pin
Tower-cap	Main chord angle iron ∠125×125×12	space truss structure of bilateral symmetry and spire welded by angel iron and steel board
Upper and lower abutment	Main steel board δ12, δ16 Fastness section ∠90×90×8 weld-square	welded by steel board and angle iron
Counter jib	Main chord [20a Angle iron of diagonal web member is two layer	welded by u-iron, angle iron and expanded metal
Cover frame	Main chord u-iron weld-square [8	Space frame structure welded by angle iron steel board
Tow kinds of underframe	Main frame I-bar I 25	welded by I-bar and steel board
	Main frame u-iron weld-square [16a	welded by u-iron weld-square
Drawbar of jib	Ø40	welded by steel iron and round steel