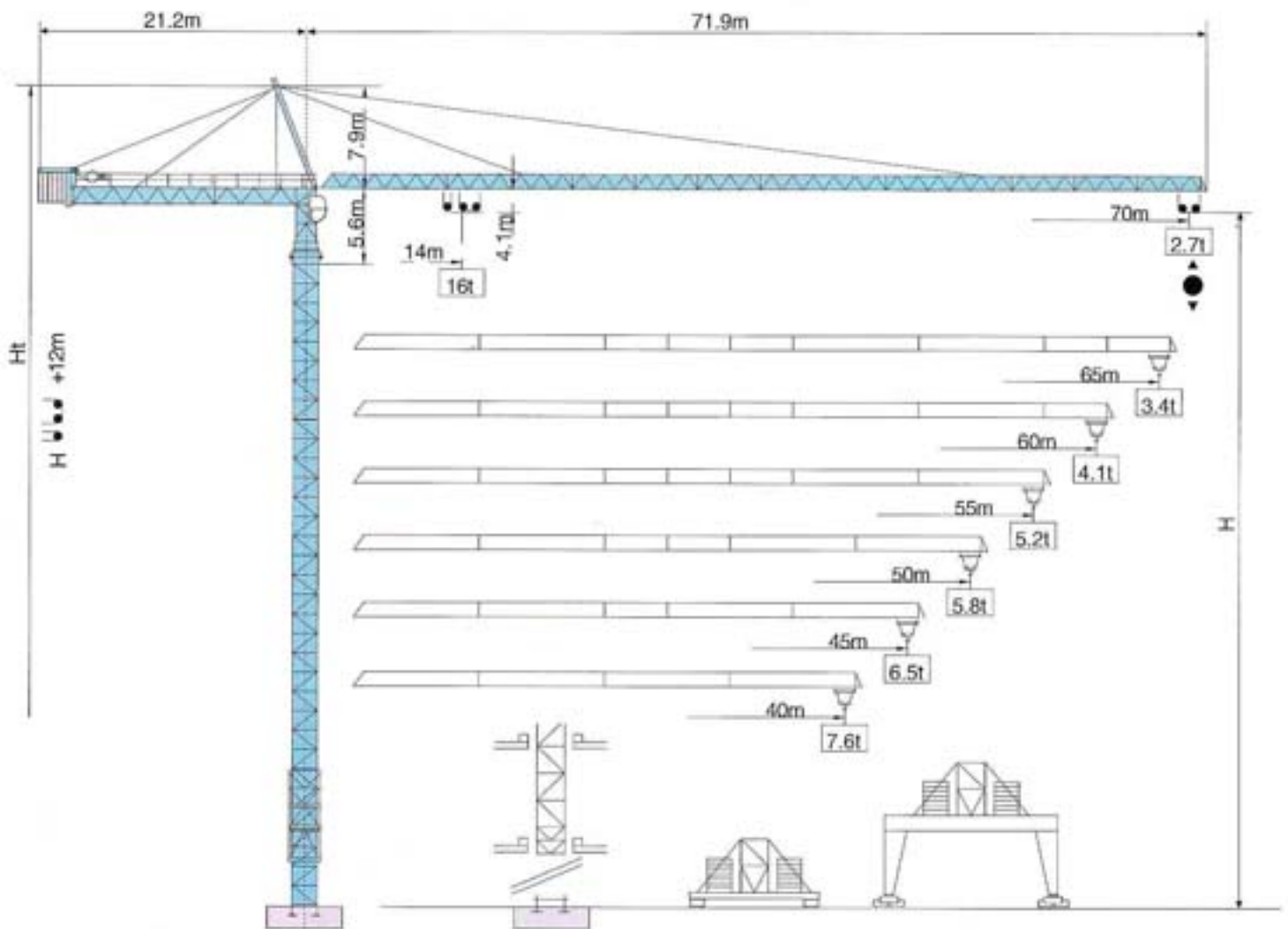
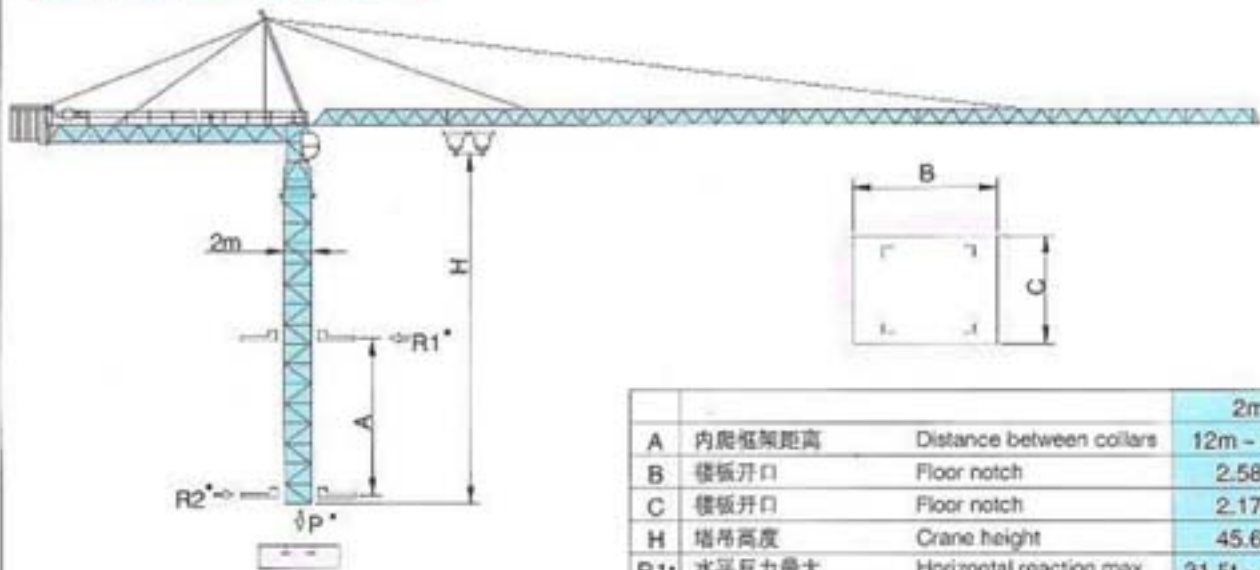


# TOWER CRANE LT40/7027



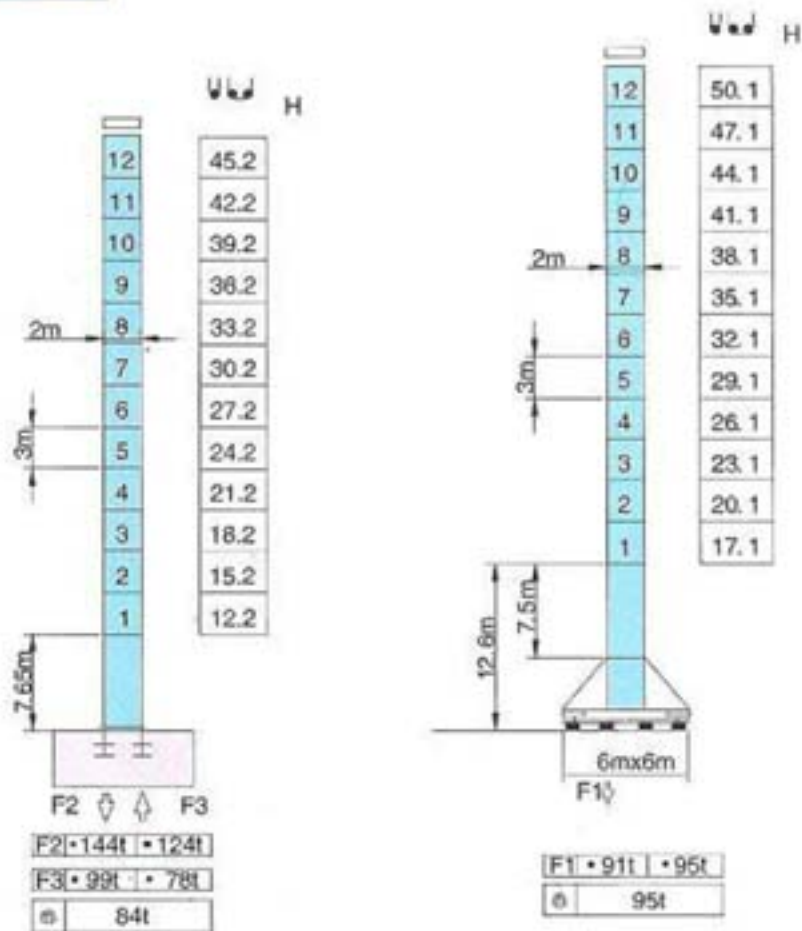
通过ISO9001国际质量体系认证

内爬塔机 Climbing crane



			2m
A	内爬框架距离	Distance between collars	12m - 19m
B	楼板开口	Floor notch	2.58m
C	楼板开口	Floor notch	2.17m
H	塔吊高度	Crane height	45.6m
R1	水平反力最大	Horizontal reaction max.	31.5t - 19.9t
R2	水平反力最大	Horizontal reaction max.	28t - 16.4t
P	塔吊自重 (工作状态)	Crane weight (in service)	102t

塔身截面 Mast: 2mx2m



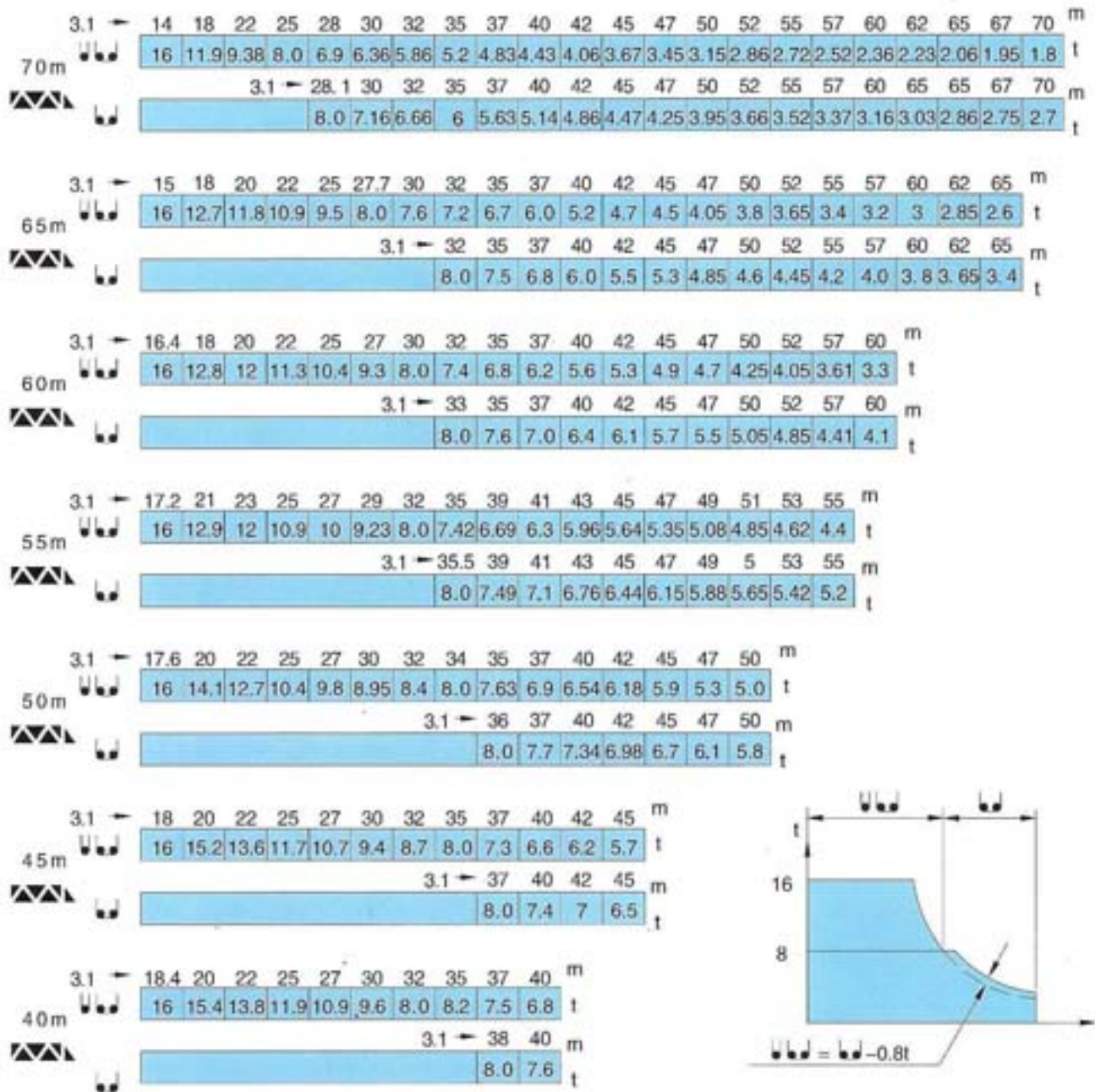
F 反力 Reactions

- 工作状态 In service
- 非工作状态 Out of service

Ⓢ自重 Self-load

不带载荷及配重, 最大臂长及标准高度时的自重。 Without load and counter-weight with longest jib and standard height.










载荷特性 Load Diagrams



塔机配重表 Counter-weight

70m	19.8t
65m	19.2t
60m	18.6t
55m	16.4t
50m	16t
45m	13.4t
40m	11.1t



机构特性 Mechanisms specification											kW			
起升 Hoisting		55LVF40	m/min	0-32	0-64	0-96	0-16	0-32	0-48	600	55			
			t	8	4	2	16	8	4					
		70RCS40	m/min	0-30		0-60	0-15		0-30		550		51.5	选择型 Optional winch
			t	8		4	16		8					
		90LVF40	m/min	0-52	0-104	0-152	0-26	0-52	0-78		600* >600		90	选择型 Optional winch
			t	8	4	2	16	8	4					
变幅 Trolleying		7.5TVF	m/min	0-55							7.5			
		8T3V8	m/min	17/42/84							7.5/7.5/3	选择型 Optional winch		
回转 Slewing		145SVT	r/min	0-0.7							145Nm x 2			
行走 Travelling		5.5TRVF	m/min	0-30							5.5 x 4			
 电源 Power Supply				380v 50Hz / 440v 60Hz										
 供电容量 Necessary Electric Power				55LVF:105KVA										
采用其它形式起升机构 Other Form Hoisting				90LVF:150KVA 70RCS:100KVA										

※ 在这种情况下要同制造商协商 Consult us

各种参数以修改为准 subject to modification