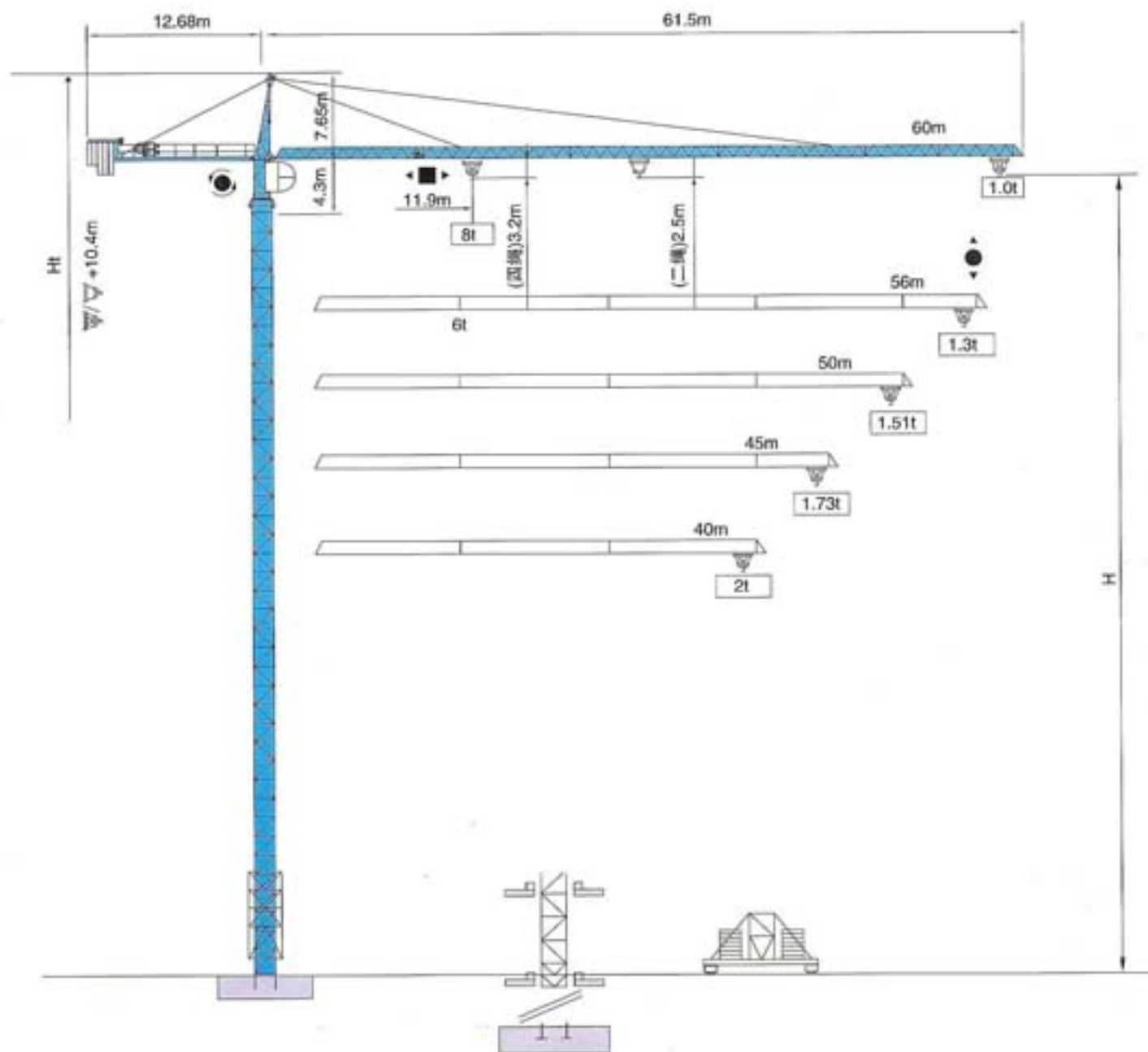


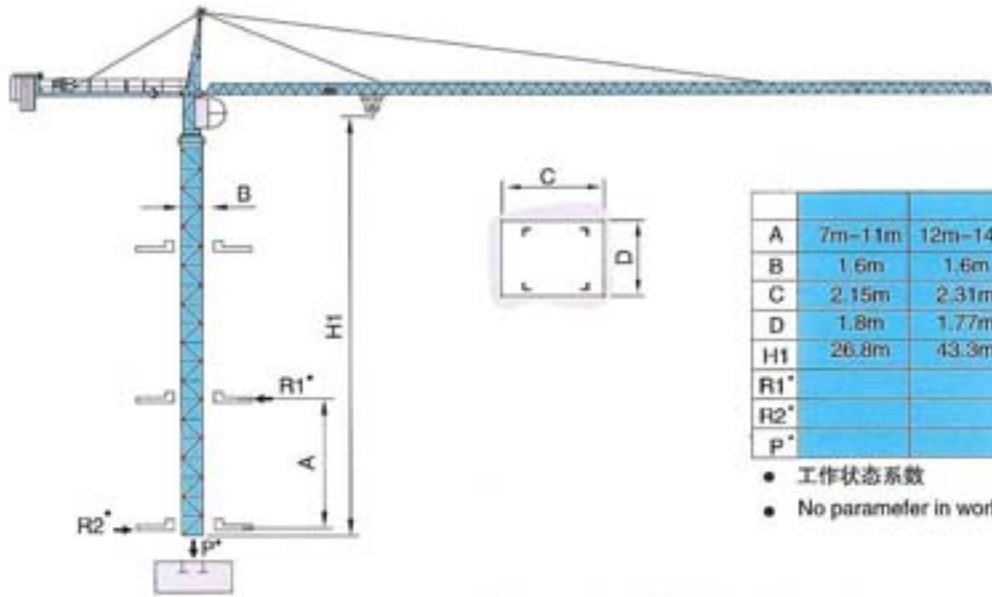
TOWER CRANE LT20

6010A
6010B
5613A
5613B



通过ISO9001国际质量体系认证

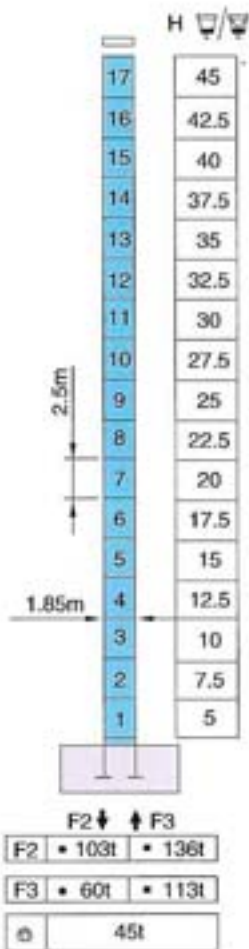
内爬塔机 Climbing crane



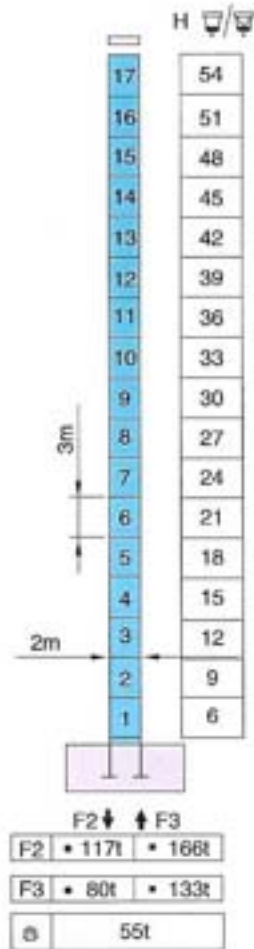
- 工作状态系数
- No parameter in working service

※ 采用这种方式请与制造商联系 Consul tus

塔身截面 Mast:1.85m × 1.85m



塔身截面 Mast:2m × 2m



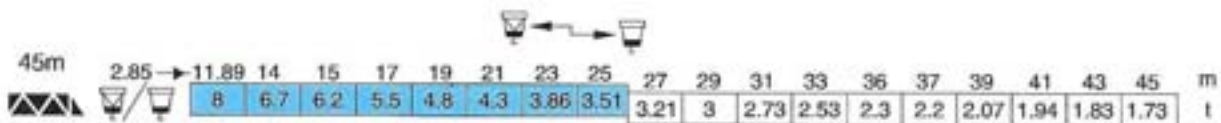
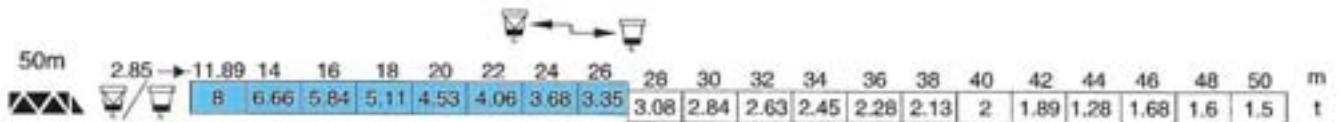
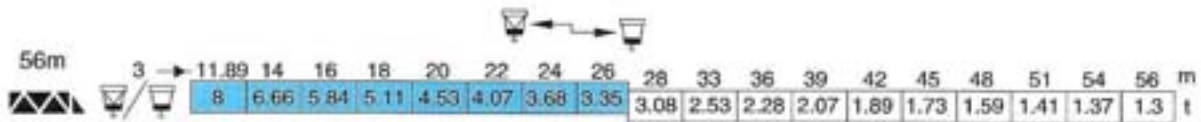
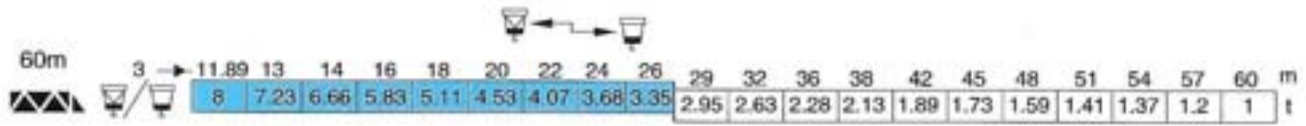
F 反力 Reactions


- 工作状态 In service
- 非工作状态 Out of service



自重

不带载荷及配重, 最大臂长及标准高度时的自重。 Without load and ballast with longest jib and self-weight in maximum free standing height.

载荷特性 Load diagrams





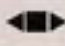

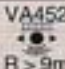

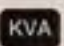
 标准小车可使用2/4倍率绳 (使用四倍率绳时应从二倍率载荷减去0.1t)。

Standard trolley 2/4 fall (when using  subtract 0.1t from the loads )

塔机配重表 Counter-jib ballast

	
	
60m	
56m	
50m	
45m	



机构特性 Mechanisms specification							Ch-ps hp	kW	 m	
起升 Hoisting		30RM	m/min	34	68	17	34	40	30	440 >400※
			1	4	2	8	4			
变幅 Trolleying		4T3V4	m/min	7.5/28/57					95Nm	选择型 Optional winch
		3V行星减速器	m/min	8.4/30/60					5/3.7/1.1	
回转 Slewing		绕线电机 偶合器	r/min	0-0.06				6×2	4.4×2	
		RCV95	r/min	0-0.06					95×2Nm	选择型 Optional winch
行走 Travelling	 VA452 R > 9m	RT443	m/min	12.5-25				5×4	3.7×4	
 电源 Mains supply			380v 50Hz/440v 60Hz							
 供电容量 Necessary electric power			70kVA							

LT20/6010A · 6010B · 5613A · 5613B自升式塔式起重机是中国建筑科学院机械化分院研制。本公司技术改造的新机型。适用于高层建筑施工。该塔机最大工作幅度60米，最大起重量8吨，最大起重力矩980kN·m。该塔机起升、变幅、回转机构可选用交流变频调速技术，供用户选择。

The self-raised tower cranes as the types of LT20/6010A,6010B,5613A,5613B are developed by "institute of building mechanization of China academy of building research" and improved by us ,they are all new styles to be used on the construction of tall buildings.

It's max working range is 60m,max hoisting capacity 8t,max hoisting moment 980kN·m,max.

Customers can choose change frequency conversion speed change technology on the hoisting,trolleying and slewing mechanism about the tower crane.