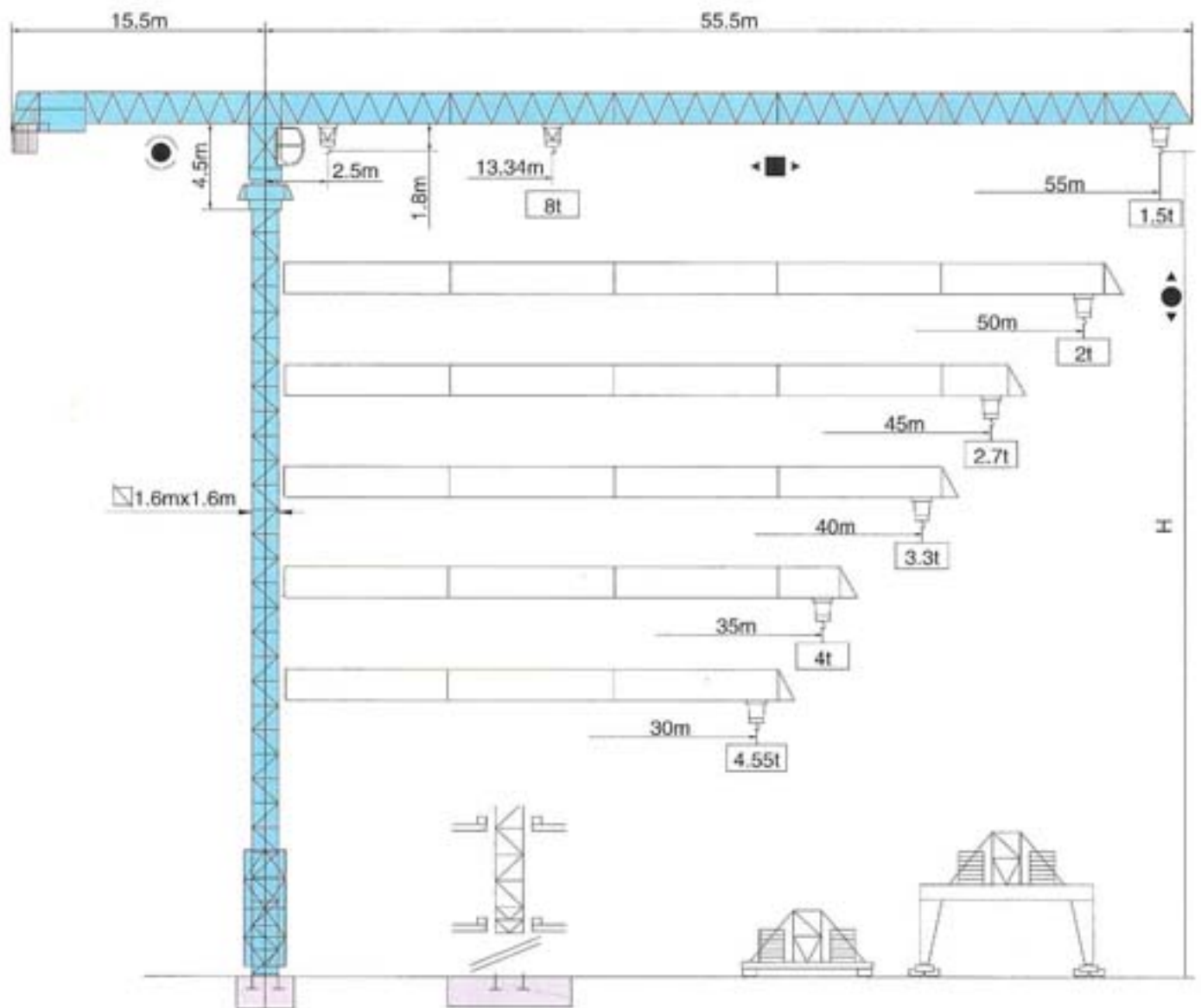
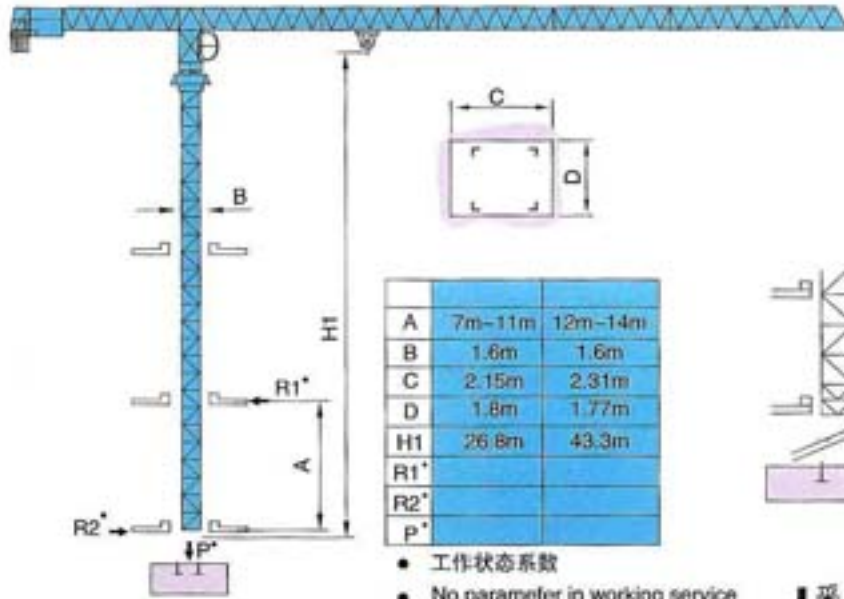


TOWER CRANE LT20 5515 5020



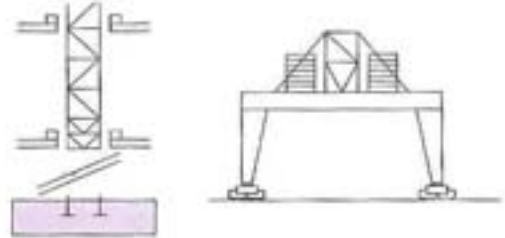
通过ISO9001国际质量体系认证

内爬塔机 Climbing crane



A	7m-11m	12m-14m
B	1.6m	1.6m
C	2.15m	2.31m
D	1.8m	1.77m
H1	26.8m	43.3m
R1'		
R2'		
P'		

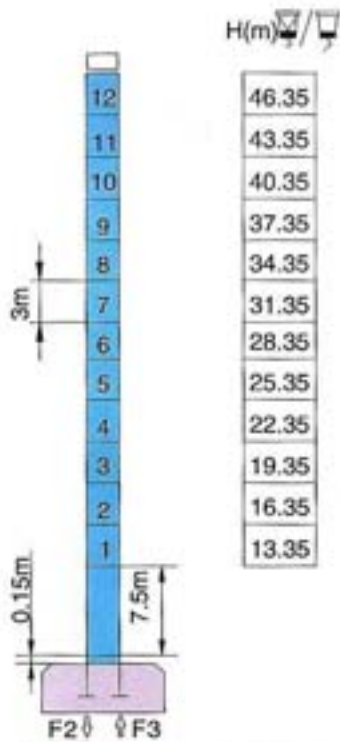
- 工作状态系数
- No parameter in working service



■ 采用这种方式请与制造商联系 Consult us

塔身截面 Mast 1.6mx1.6m

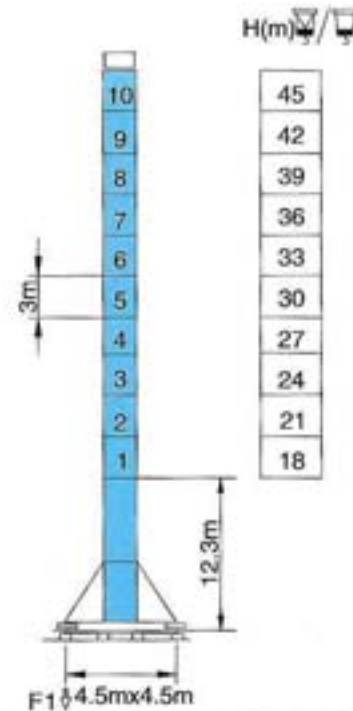
▲▲▲ 30m → 54m



F2	● 64t	■ 78t
----	-------	-------

F3	● 95t	■ 104t
----	-------	--------

	43t
--	-----



F1	● 72t	■ 91t
----	-------	-------

	50t
--	-----

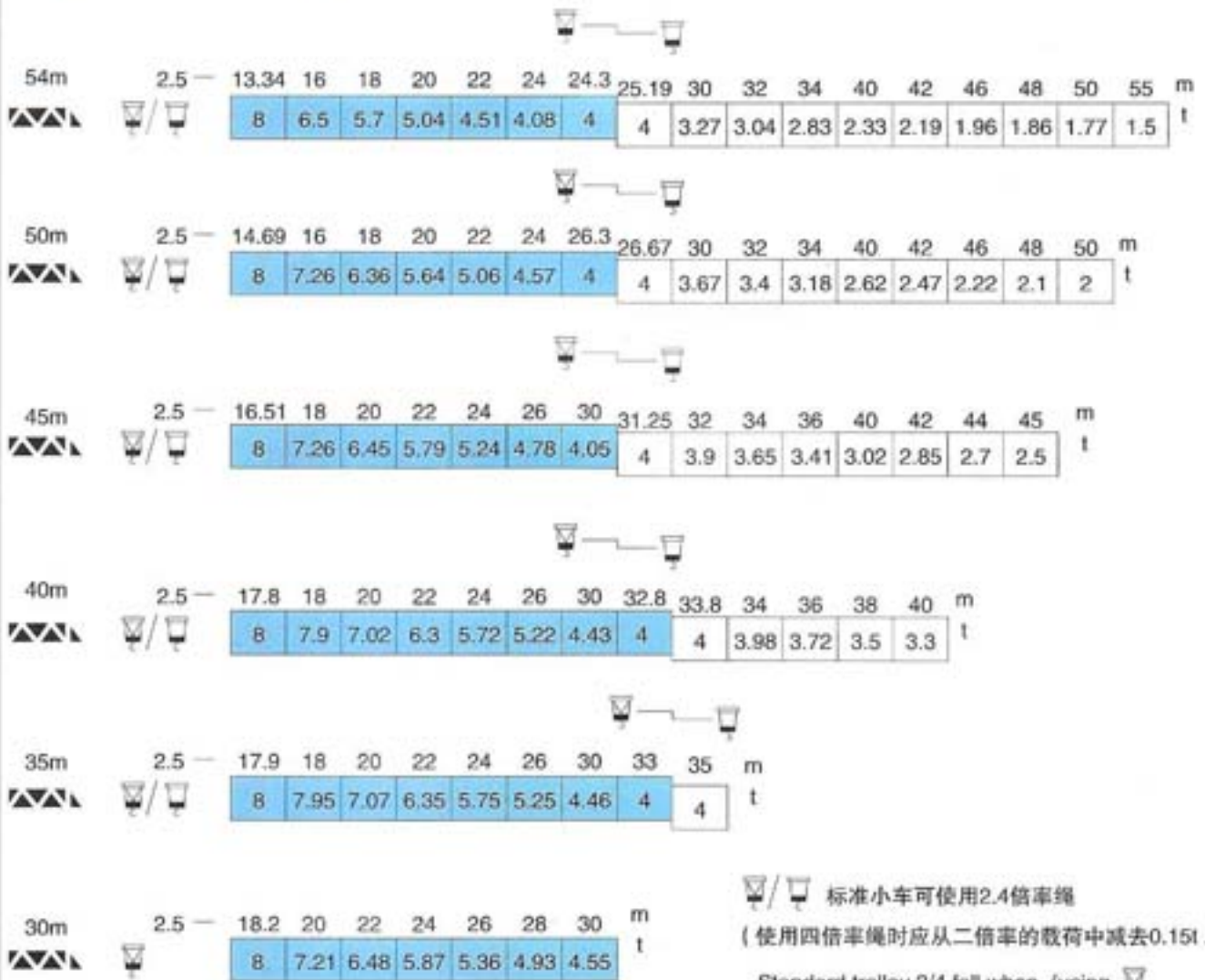
F 反力 Reactions

- 工作状态 In service
- 非工作状态 Out of service

⊕ 自重 Self-load

不带载荷及配重，最大臂长及标准高度时的自重。 Without load and counter-weight with longest jib and standard height.

载荷特性 Load diagrams












标准小车可使用2.4倍率绳
 (使用四倍率绳时应从二倍率的载荷中减去0.15t.)
 Standard trolley 2/4 fall when (using
 subtract 0.15t from the loads)

平衡臂配重表 Counter-jibballast

塔身高度 (m)	平衡臂长度 (m)	配重 (kg)
54m	15.5m	11400
50m	15.5m	11400
44m	15.5m	10405
40m	15.5m	10405
34m	15.5m	8505
30m	15.5m	7600



机构特性 Mechanisms specification										KW		
起升 Hoisting		30RW	m/min	34		68		17	34	400 >400*	30	
			t	4		2		8	4			
		30LVF	m/min	0-34	0-68	0-102	0-17	0-34	0-51	400 >400*	30	选择型 Optional winch
			t	4	2	1.1	8	4	2			
变幅 Trolleying		4T3V4	m/min	7.5/28/57							95Nm	
回转 Slewing		95SVT	r/min	0-0.8							95Nm×2	
行走 Travelling		4TRVF	m/min	0-30							4×4	
 电源 Power Supply						380v 50Hz / 440v 60Hz						
 供电容量 Necessary Electric Power						60KVA						

※ 在这种情况下要同制造商协商 Consult us

各种参数以修改为准 subject to modification