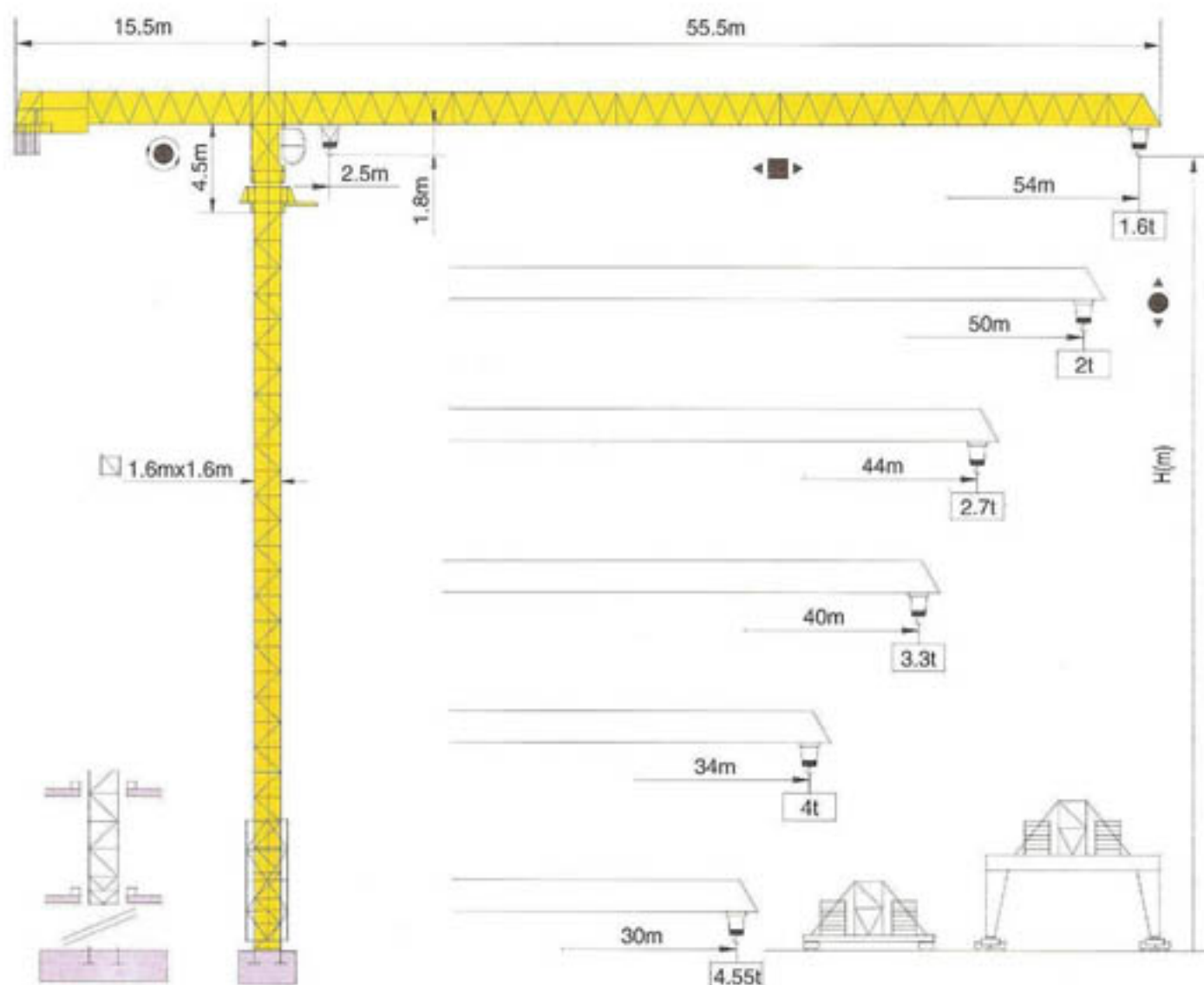
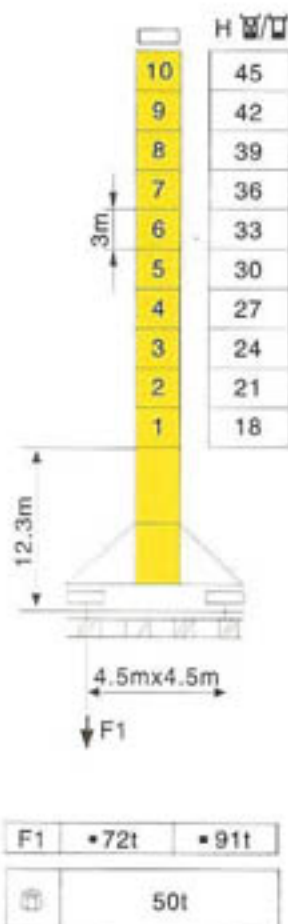
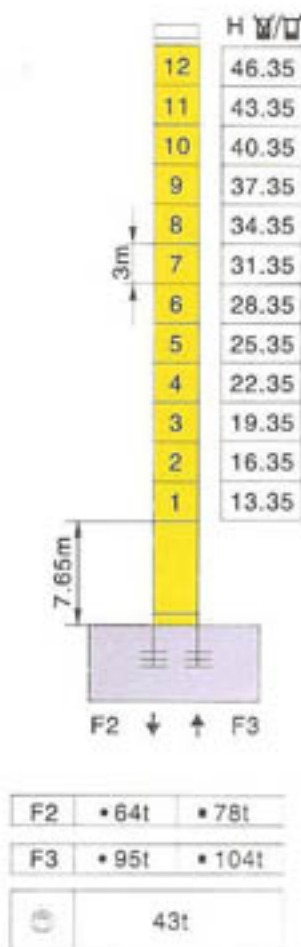


# FLAT-TOP TOWER CRANE R54 · 16



塔身截面 Mast: 1.6m x 1.6m



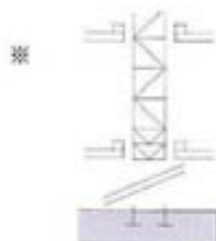
F 反力 Reactions

- 工作状态 In service
- 非工作状态 Out of service

⊕ 自重

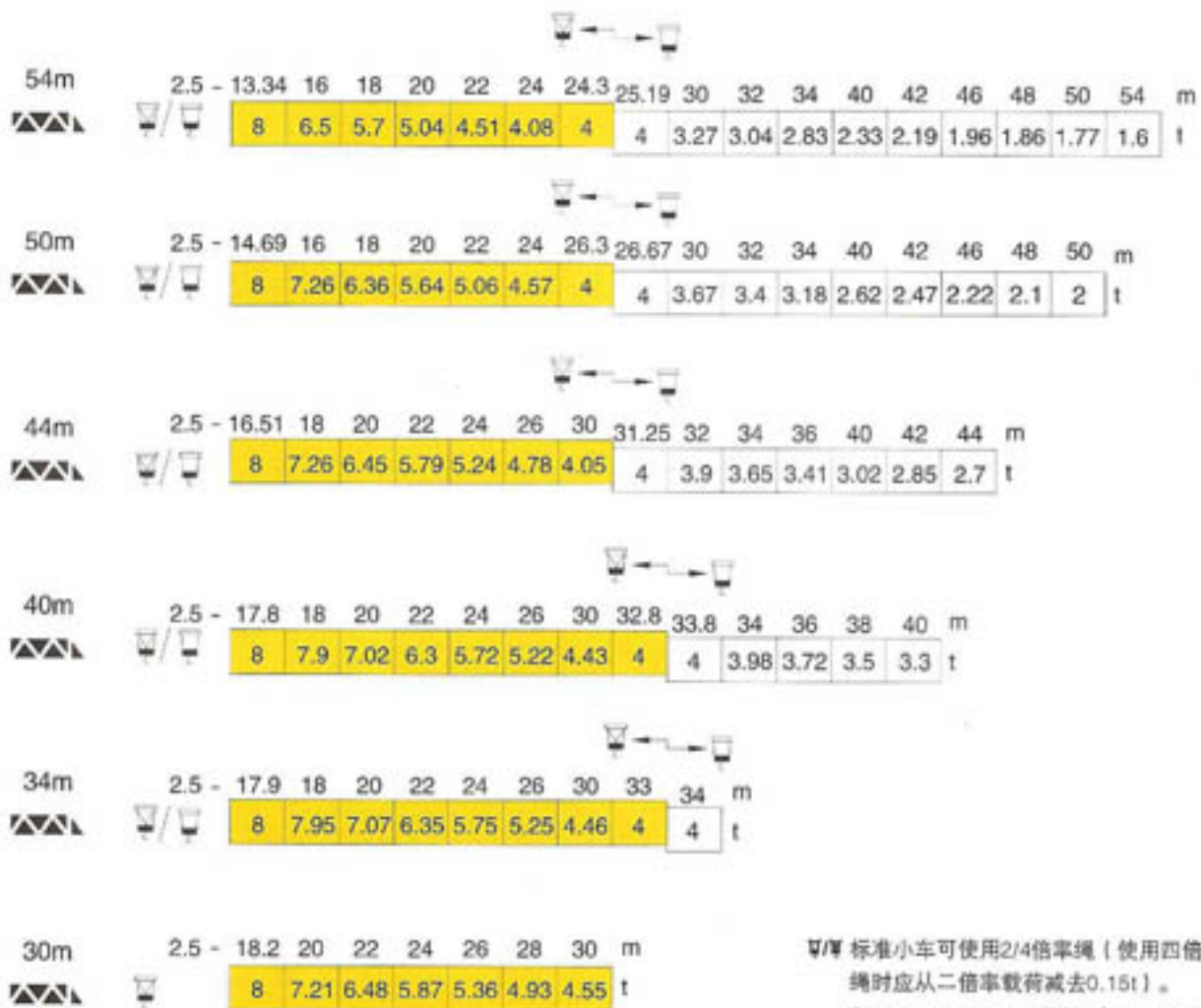
不带载荷及配重, Without load and ballast with  
最长臂长及标准 longest jib and self-weight in  
高度时的自重。 maximum free standing height.

可变换的其它安装方式 Mounting possibilities



※ 采用这种方式请与制造商联系 Consult us



载荷特性 Load diagrams



标准小车可使用2/4倍率绳（使用四倍率绳时应从二倍率载荷减去0.15t）。  
Standard trolley 2/4 fall (when using 4 fall subtract 0.15t from the loads)

塔机配重表 Counter-jib ballast

塔机高度	平衡臂长度	配重 (kg)
54m	15.5m	11400
50m	15.5m	11400
44m	15.5m	10405
40m	15.5m	10405
34m	15.5m	8505
30m	15.5m	7600

机构特性 Mechanisms specification								Ch- ps hp	kW	 m	
起升 Hoisting		30RW	m/min	34	68	17	34	40	30	400 >400 <sup>※</sup>	
			t	4	2	8	4				
		30LVF	m/min	0-34	0-68	0-102	0-17	0-34	0-51	30	选择型 Optional winch
			t	4	2	1.1	8	4	2		
变幅 Trolleying			m/min	8.8/39				4	3		
		3DVF	m/min	0-40					3	选择型 Optional winch	
回转 Slewing		OMD45	r/min	0-0.8				6×2	4.5×2		
		4RVF	r/min	0-0.7					4×2	选择型 Optional winch	
行走 Travelling		RT443	m/min	0-30				5×4	3.7×4		
 电源 Mains supply			380v 50Hz / 440v 60Hz								
 供电容量 Necessary electric power			65kVA LVF:※								

R54 · 16平头式塔式起重机是一种新型的自升塔式起重机。机构先进、性能稳定、效率高、质量可靠。由于平头式塔机所特有的结构形式—没有塔头及拉杆,使其具有许多优点,如安装快捷、方便,非常适合于某些特殊场合施工。

该塔机最大工作幅度54m,最大起重量8t,最大起重力矩1456kN.m。

该塔机起升、变幅、回转机构可选用交流变频调速技术,供用户选择。

Flat-top R54 · 16 is a new type of self-raising tower crane, with advanced mechanisms, high efficiency, reliable quality, stable performance. Thanks to the special structure—lack of cat-head and tie-bar, flat-top tower crane has many advantages, such as simple and fast erection, excellent suitability to some special construction site.

It's max. radius is 54m, max. hoisting load 8t, max. hoisting moment 1456kNm.

Customers can choose change frequency conversion speed change technology on the hoisting, trolleying and slewing mechanism about the tower crane.

执行标准: GB/T 13752



**威海市华塔建筑机械有限公司**  
 WEIHAI HUATA BUILDING MACHINERY CO., LTD

公司地址(Add): 山东省文登市葛家镇紫金路11号

NO.11 Zijinlu Gejia Town Wendeng Shandong

销售热线(Sell): 0086-13573722789

热线传真(Fax): 0086-631-8880888

公司网址: <http://www.huata.cn>

E-mail: [huataexport@126.com](mailto:huataexport@126.com)