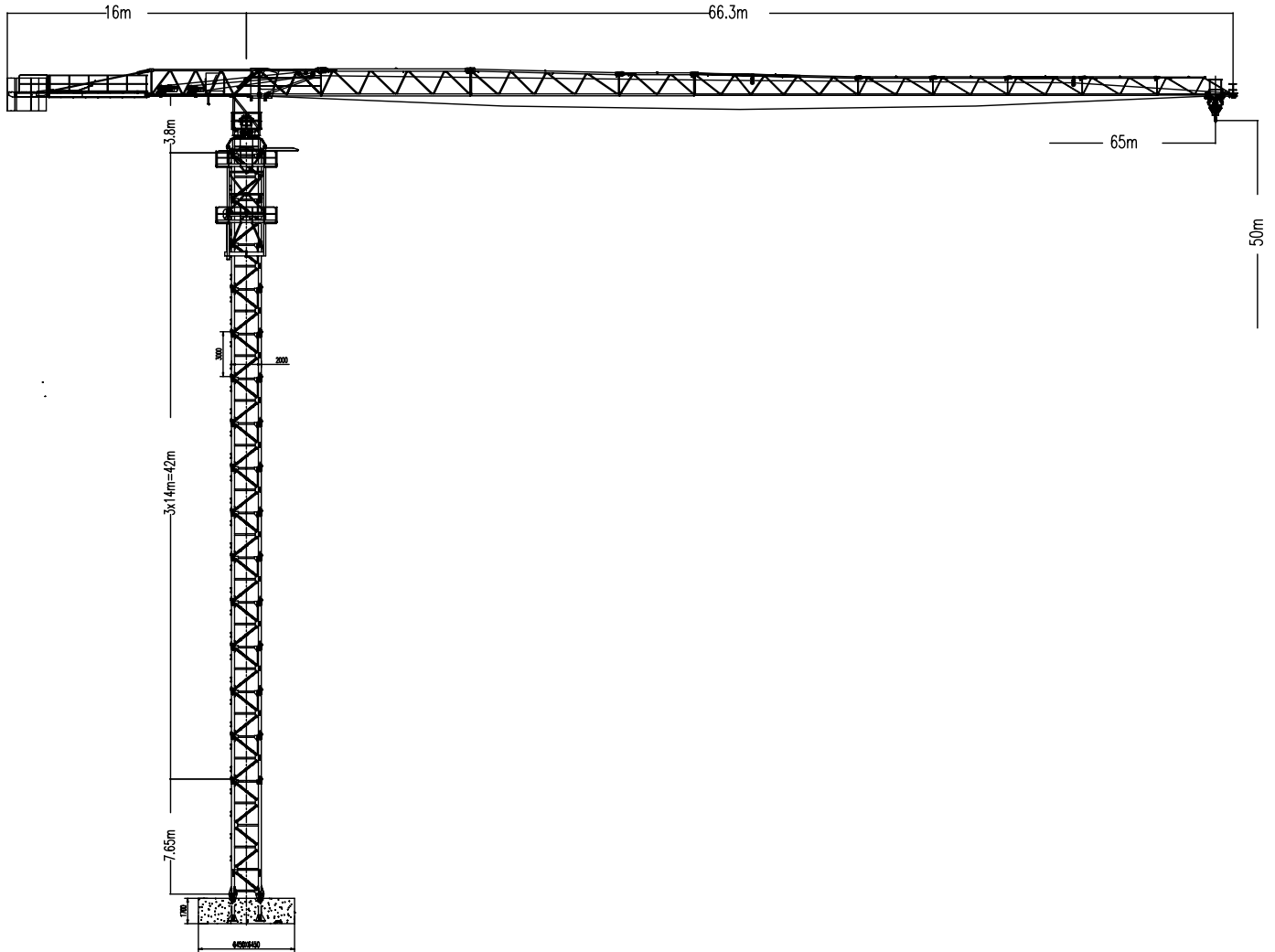




威海市华塔建筑机械有限公司

WEIHAI HUATA BUILDING MACHINERY CO., LTD

■ Dimensions & load diagram



65m	4 fall	radius (m)	2.5-14	17.6	18	20	25	30	35	40
		capacity (kg)	10000	8000	7810	6930	5360	4330	3600	3050
		radius (m)	45	50	55	60	65			
		capacity (kg)	2630	2290	2020	1790	1600			



威海市华塔建筑机械有限公司

WEIHAI HUATA BUILDING MACHINERY CO., LTD

65m	2	radius (m)	2.5-26	33.6	35	40	45	50	55	60	65
	fall	capacity (kg)	5000	4000	3810	3260	2840	2500	2220	1990	1800

■ Main technical parameter

Item		Unit	Parameter
Max. lifting capacity	2 fall	t	5
	4 fall		10
Min. working radius		m	2.5
Max. working radius		m	65
Hoisting height	Independent		50
	Attachmen t	2 fall	183
		4 fall	93
Hoisting speed	2 fall	m/min	0~85
	4 fall		0~42
Power of hoisting mechanism		KW	40.5×2
Slewing speed		r/min	0~0.72
Torque of slewing motor		N.m	120×2
Trolley speed		m/min	0~58
Climbing speed		m/min	0.4
Outline dimension	Total height (independent)		61.4
	Distance between jib nose to slewing center		66.3
	Distance between counter jib nose to slewing center		16
Self-weight	Structure weight (independent)		71.5
	Counter weight		18.3
Working environment temperature		°C	-20~+40
Wind speed in working state			≤6 grade



# 威海市华塔建筑机械有限公司

## WEIHAI HUATA BUILDING MACHINERY CO., LTD

Wind-speed in non-working state		≤11 grade
Max. wind speed at installation height(while fixing, dismantling, climbing or dropping)		≤4 grade
Power		~380V±10%,50Hz
Others	Grade	U5
	Loading state	Q2
	Working level	A5

### ■ Main parts parameter

Hoisting	Model: 55RCS25			
	Motor	Model	YTSR180M <sub>1</sub> -4E	
		Frequency	HZ	50/60
		Rated rotate speed	r/min	1440/1740
		Power	KW	40.5/48.5
	Reducer	Drive ratio	i	35.6/17.8
	Roller	Rope quantity	m	500
		Number of layers		5
		Diameter	mm	φ605
	Steel rope	Pull	N	25000/12500
		Specification	φ14	
	Hoisting speed	2 fall	m/min	0-85
		4 fall	m/min	0-42
	Hoisting capacity	2 fall	T	5
		4 fall	T	10
Slewing	Model : RCV120			
	Motor	Model	YTLEJ112L-120-4F	
		Frequency	HZ	50
		Rated rotate speed	r/min	1250



## 威海市华塔建筑机械有限公司

# WEIHAI HUATA BUILDING MACHINERY CO., LTD

		Torque	N.m	120
	Reducer	Drive ratio	i	143
	Small gear	Modulus	M	12
		Teeth number	Z	12
		Coefficient	X	+0.5
	Slewing bear	Model	HSW.35.1540	
		Teeth number	Z	144
		Coefficient	X	+1.4
	Slewing speed		r/min	0~0.72
	Number		set	2

Hydraulic climbing	Hydraulic pump station	Adjusted pressure of overflow vavle	Mpa	38	
		Overflow pressure with low voltage	Mpa	6.5	
		Flux	L/min	14	
		Power	KW	11	
		Tank cubage	L	>100	
	Climbing cylinder	Working pressure without bar lacuna	Mpa	50	
		Working pressure with bar lacuna	Mpa	20	
		Diameter of bowl	mm	φ180	
		Diameter of bar	mm	φ125	
		Journey	mm	1600	
		Fixed distance	mm	2180	
		Climbing speed	m/min	0.4	
		Max. climbing force	T	90	
Trolley	Model		95JX2		
	Motor	Model		YTLEJ112L-95-4	
		Rotate speed		r/min	1500
		Torque		N.m	95
	Diameter of roller		mm	φ368	



威海市华塔建筑机械有限公司

**WEIHAI HUATA BUILDING MACHINERY CO., LTD**

	Max. dragging journey	m	65
	Steel rope	Specification	φ7
	Trolley speed	m/min	0-58