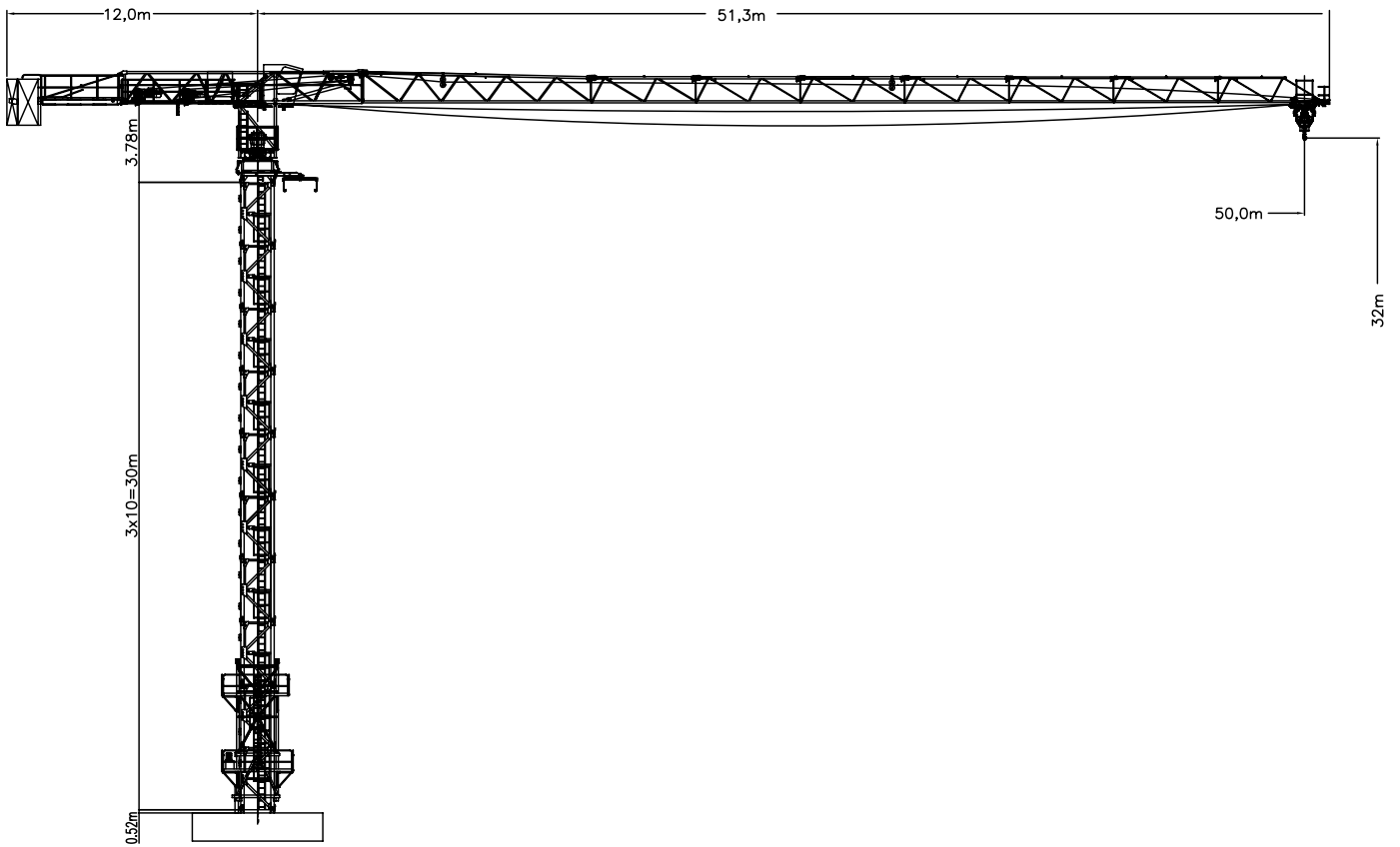


## Dimensions



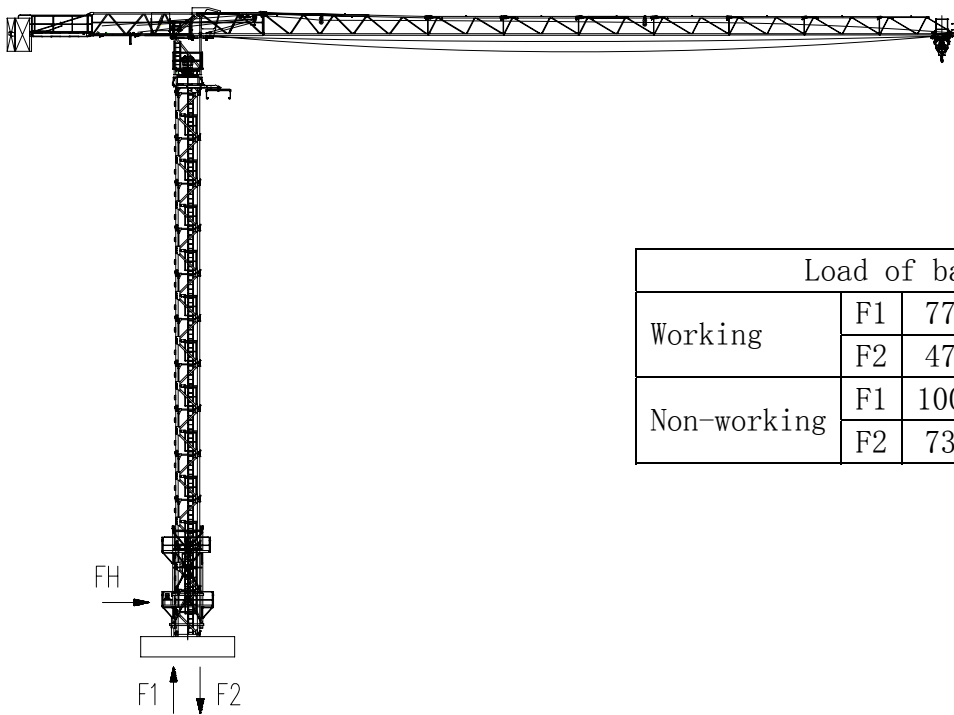
## Load table

50m	2fall	Radius (m)	2.5-25.98	28	30	32	34	36	38	40	42	44
		Load (kg)	2500	2275	2082	1912	1763	1631	1512	1405	1309	1221
		Radius (m)	46	48	50							
		Load (kg)	1141	1067	1000							

50m	4fall	Radius (m)	2.5-14.56	16	18	20	22	24	26	28	30	32
		Load (kg)	5000	4398	3835	3384	3015	2708	2448	2225	2032	1862
		Radius (m)	34	36	38	40	42	44	46	48	50	
		Load (kg)	1713	1581	1462	1355	1259	1171	1091	1017	950	

## Technical parameters

Hoisting	Fall	Speed (m/min)		Load (kg)	Power (kw)	
	4fall	I	4.5	5		15/15/4
		II	12	5		
		III	25.4	2.5		
	2fall	I	9	2.5		
		II	25.4	2.5		
III		50.8	1.25			
Slewing		0.64 (r/min)		3.7X2		
Trolley		19/38 (m/min)		1.5/2.4		
Climbing		0.5 (m/min)		5.5		
Power		380V 50Hz		35		



Load of basis N				
Working	F1	771424	FH	42926
	F2	478142		
Non-working	F1	1001907	FH	89733
	F2	735645		